

2025

Center for Academic Excellence (CAE)

Dr. Clay Armstrong, Executive Director

Laura Drake, Instructor/Coordinator, Bulldog Rebound

[BULLDOG REBOUND REPORT]

This report, updated annually, is designed to detail the progress of Bulldog Rebound and its participants to determine its effectiveness. This program is housed in and managed by the Center for Academic Excellence (CAE).

June 12, 2025

Purpose and History of Bulldog Rebound

Originally titled the Learning Skills Support Program, Bulldog Rebound was created by the Office of the Provost and Center for Academic Excellence (CAE) at Mississippi State University (MSU) to provide academic assistance to those students who have been placed on academic suspension. This program is offered to suspended students who petition to stay in school and improve their academic performance. It provides an alternative to the university policy which traditionally has required suspended students to stay out of school for one academic semester.

Bulldog Rebound is designed to improve the progress of this population of students by specifically focusing on their individual obstacles to their academic success. Bulldog Rebound at MSU is structured to provide students with enhanced advising and with the study skills to facilitate better study habits and increase performance and success in college. As participants in Bulldog Rebound, students must fulfill the following six main obligations:

- (1) meet with the coordinator of Bulldog Rebound in the CAE three times a semester;
- (2) meet with their academic advisors twice a semester;
- (3) complete the specified section of LSK 1033: *Fundamentals of Achievement* (3-credit hour);
- (4) complete weekly mandatory study hours, which count towards their attendance grade in LSK 1033;
- (5) complete a Student Analysis and Reflection Project;
- (6) maintain a 2.0 GPA or higher for the semester in which they are enrolled in the program in compliance with AOP 12.16.

Bulldog Rebound was first made available to students who were suspended at the end of spring 2005 and implemented in fall 2005.

Exciting Additions to Bulldog Rebound:

Bulldog Rebound finish the first full year with our Bulldog Rebound Student Guides. During the academic year, the Student Guides participated in LSK 1033, LSK 1131, and LSK 2990 as an upperclassmen panel covering topics from time management and stress relief to overcoming academic distress. They also held our third annual Tips and Treats tabling event on the last class days to pass out candy bags, words of encouragement, and final exam study pointers. For more information regarding our Student Guides, please visit:

<https://www.bulldogrebound.msstate.edu/ambassadors>.

Bulldog Rebound has a new graduate assistant, Mr. Brayden Smith. Brayden is a first semester graduate student in the MBA program. He graduated from Mississippi State's Bagley College of Engineering with a Bachelor of Science in Electrical Engineering. Brayden will assist with Bulldog Rebound participants and the Student Guides beginning in June. We are very excited to welcome Brayden to the Bulldog Rebound family.

Table 1: Success Rates* of Bulldog Rebound Participants			
Participation Semesters	No. of Bulldog Rebound Participants †	No. of Successful Participants	Percentage of Successful Participants
Cohort 1—Fall 2005	60	37	62%
Cohort 2—Spring 2006	59	46	78%
Cohort 3—Fall 2006	120	92	77%
Cohort 4—Spring 2007	100	76	76%
Cohort 5—Fall 2007	160	135	84%
Cohort 6—Spring 2008	84	68	81%
Cohort 7—Fall 2008	195	155	79%
Cohort 8—Spring 2009	149	107	72%
Cohort 9—Fall 2009**	219	165	75%
Cohort 10—Spring 2010	153	126	82%
Cohort 11—Fall 2010**	205	168	82%
Cohort 12—Spring 2011	155	124	80%
Cohort 13—Fall 2011**	222	171	77%
Cohort 14—Spring 2012	175	142	81%
Cohort 15—Fall 2012**	218	159	74%
Cohort 16—Spring 2013	110	80	73%
Cohort 17— Fall 2013**	143	115	81%
Cohort 18—Spring 2014	96	76	79%
Cohort 19 -- Fall 2014**	169	129	76%
Cohort 20 -- Spring 2015	103	83	81%
Cohort 21—Fall 2015**	151	115	76%
Cohort 22—Spring 2016	100	89	89%
Cohort 23--Fall 2016**	174	128	76%
Cohort 24--Spring 2017	103	74	72%
Cohort 25--Fall 2017**	174	134	77%
Cohort 26--Spring 2018	87	65	75%
Cohort 27--Fall 2018**	124	92	74%
Cohort 28--Spring 2019	88	73	83%
Cohort 29--Fall 2019**	146	117	80%
Cohort 30--Spring 2020	103	86	83%
Cohort 31--Fall 2020**	14	11	79%
Cohort 32--Spring 2021	72	55	76%
Cohort 33--Fall 2021**	111	81	73%
Cohort 34--Spring 2022	74	66	89%
Cohort 35--Fall 2022**	80	66	83%
Cohort 36--Spring 2023	73	65	89%
Cohort 37--Fall 2023**	71	55	77%
Cohort38--Spring 2024	30	28	93%
Cohort 39--Fall 2024**	44	38	86%
Cohort 40--Spring 2025	21	18	86%
Totals	4735	3710	78%

* Successful students are defined as those who met all requirements of Bulldog Rebound and were taken off academic suspension.

** Includes students that took LSK 1033 in Summer or Fall term and satisfied all requirements of the Bulldog Rebound.

† Does not include students who withdrew during the participating semester.

Table 2: Comparison of Students Retained* One Year After Suspension Date							
Cohort—Participating Semester	Retention Measured Semester	No. of Bulldog Rebound Participants	No. of Participants Retained	Participant Retention Percentage	No. of Nonparticipants	No. of Nonparticipants Retained	Nonparticipant Retention Percentage
Cohort 1—Fall 2005	Spring 2006	60	28	47%	89	17	19%
Cohort 2—Spring 2006	Fall 2006	59	37	63%	54	17	31%
Cohort 3—Fall 2006	Spring 2007	120	77	64%	151	36	24%
Cohort 4—Spring 2007	Fall 2007	100	66	66%	92	18	20%
Cohort 5—Fall 2007	Spring 2008	160	117	73%	162	30	19%
Cohort 6—Spring 2008	Fall 2008	84	52	62%	105	22	21%
Cohort 7—Fall 2008	Spring 2009	195	136	70%	154	33	21%
Cohort 8—Spring 2009	Fall 2009	149	87	58%	135	36	27%
Cohort 9—Fall 2009**	Spring 2010	219	146	67%	216	55	25%
Cohort 10—Spring 2010	Fall 2010	153	102	67%	148	38	26%
Cohort 11—Fall 2010**	Spring 2011	205	141	69%	248	65	26%
Cohort 12—Spring 2011	Fall 2011	155	99	64%	183	50	27%
Cohort 13—Fall 2011**	Spring 2012	222	148	67%	309	53	17%
Cohort 14—Spring 2012	Fall 2012	175	108	62%	189	35	19%
Cohort 15—Fall 2012**	Spring 2013	218	134	61%	290	55	19%
Cohort 16—Spring 2013	Fall 2013	110	61	55%	210	42	20%
Cohort 17— Fall 2013**	Spring 2014	143	99	69%	276	57	21%
Cohort 18—Spring 2014	Fall 2014	96	59	61%	193	43	22%
Cohort 19—Fall 2014**	Spring 2015	169	101	60%	341	80	23%
Cohort 20—Spring 2015	Fall 2015	103	62	60%	162	30	19%
Cohort 21—Fall 2015**	Spring 2016	151	117	77%	258	50	19%
Cohort 22--Spring 2016	Fall 2016	100	63	63%	148	29	20%
Cohort 23--Fall 2016**	Spring 2017	174	111	64%	249	41	16%
Cohort 24--Spring 2017	Fall 2017	103	66	64%	173	40	23%
Cohort 25--Fall 2017**	Spring 2018	171	146	85%	334	31	9%
Cohort 26--Spring 2018	Fall 2018	87	58	67%	171	35	20%
Cohort 27--Fall 2018**	Spring 2019	124	91	73%	314	44	14%
Cohort 28--Spring 2019	Fall 2019	88	60	68%	115	22	19%
Cohort 29--Fall 2019**	Spring 2020	146	106	73%	350	43	12%
Cohort 30--Spring 2020	Fall 2020	103	70	68%	123	25	20%
Cohort 31--Fall 2020**	Spring 2021	14	11	79%	21	3	14%
Cohort 32--Spring 2021	Fall 2021	72	35	49%	143	22	15%
Cohort 33--Fall 2021**	Spring 2022	111	69	62%	284	44	15%
Cohort 34--Spring 2022	Fall 2022	74	55	74%	131	25	19%
Cohort 35--Fall 2022**	Spring 2023	80	55	69%	278	48	17%
Cohort 36--Spring 2023	Fall 2023	73	51	70%	128	27	21%
Cohort 37--Fall 2023**	Spring 2024	71	53	75%	259	40	15%
Cohort 38--Spring 2024	Fall 2024	30	19	63%	96	7	7%
Cohort 39--Fall 2024**	Spring 2025	44	38	86%	196	32	16%
Cohort 40--Spring 2025	Fall 2025	21	13	62%	92	9	10%
		4732	3147	67%	7570	1429	19%

*Retention is defined as having completed the semester following the suspension period.

** Includes students that took LSK 1033 in Summer or Fall term and satisfied all requirements of the Bulldog

One Year Retention Percentages

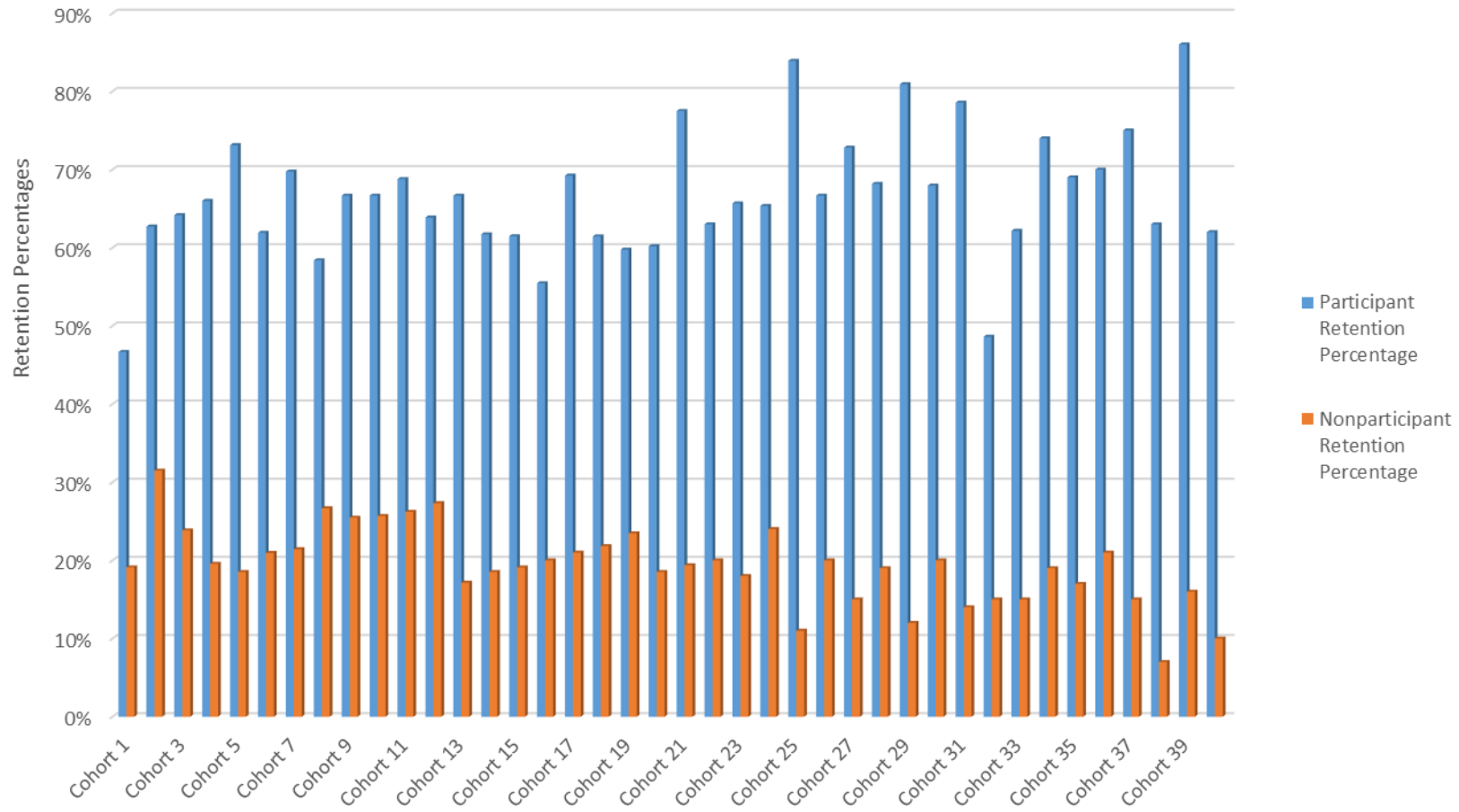


Table 3: Comparison of Student Four Year Graduation Rate*

Cohort—Participation Semester	No. of Bulldog Rebound Participants	No. of BR Participants Graduated	Participant Graduation Percentage	No. of Nonparticipants	No. of Nonparticipants Graduated	Nonparticipant Graduation Percentage
Cohort 1—Fall 2005	60	18	30%	89	9	10%
Cohort 2—Spring 2006	59	12	20%	54	8	15%
Cohort 3—Fall 2006	120	37	31%	151	11	7%
Cohort 4—Spring 2007	100	36	36%	92	9	10%
Cohort 5—Fall 2007	160	65	41%	162	14	9%
Cohort 6—Spring 2008	84	32	38%	105	15	14%
Cohort 7—Fall 2008	195	69	35%	154	11	7%
Cohort 8—Spring 2009	149	54	36%	135	16	12%
Cohort 9—Fall 2009	219	77	35%	216	18	8%
Cohort 10—Spring 2010	153	64	42%	148	14	9%
Cohort 11—Fall 2010	205	78	38%	248	17	7%
Cohort 12—Spring 2011	155	55	35%	183	20	11%
Cohort 13—Fall 2011	222	80	36%	309	15	5%
Cohort 14- Spring 2012	175	70	40%	164	14	9%
Cohort 15--Fall 2012	218	81	37%	239	19	8%
Cohort 16--Spring 2013	110	41	37%	167	8	5%
Cohort 17--Fall 2013	143	69	48%	276	17	6%
Cohort 18--Spring 2014	96	34	35%	197	21	11%
Cohort 19--Fall 2014	169	44	26%	341	48	14%
Cohort 20--Spring 2015	103	44	43%	154	10	6%
Cohort 21--Fall 2015	151	60	40%	230	16	7%
Cohort 22--Spring 2016	100	39	39%	150	16	11%
Cohort 23--Fall 2016	169	70	41%	238	17	7%
Cohort 24--Spring 2017	101	41	41%	182	18	10%
Cohort 25--Fall 2017	171	74	43%	334	28	8%
Cohort 26--Spring 2018	87	36	41%	180	21	12%
Cohort 27--Fall 2018	124	47	38%	314	26	8%
Cohort 28--Spring 2019	88	35	40%	115	14	12%
Cohort 29--Fall 2019	146	69	47%	350	25	7%
Cohort 30--Spring 2020	103	50	49%	123	15	12%
Cohort 31--Fall 2020	14	3	21%	21	1	5%
Cohort 32--Spring 2021	72	24	33%	143	10	7%
Totals	4221	1581	37%	5964	510	9%

* Four Year Graduation Rate is determined after a 4 year period beginning with the Bulldog Rebound participation semester.

Four Year Graduation Rate

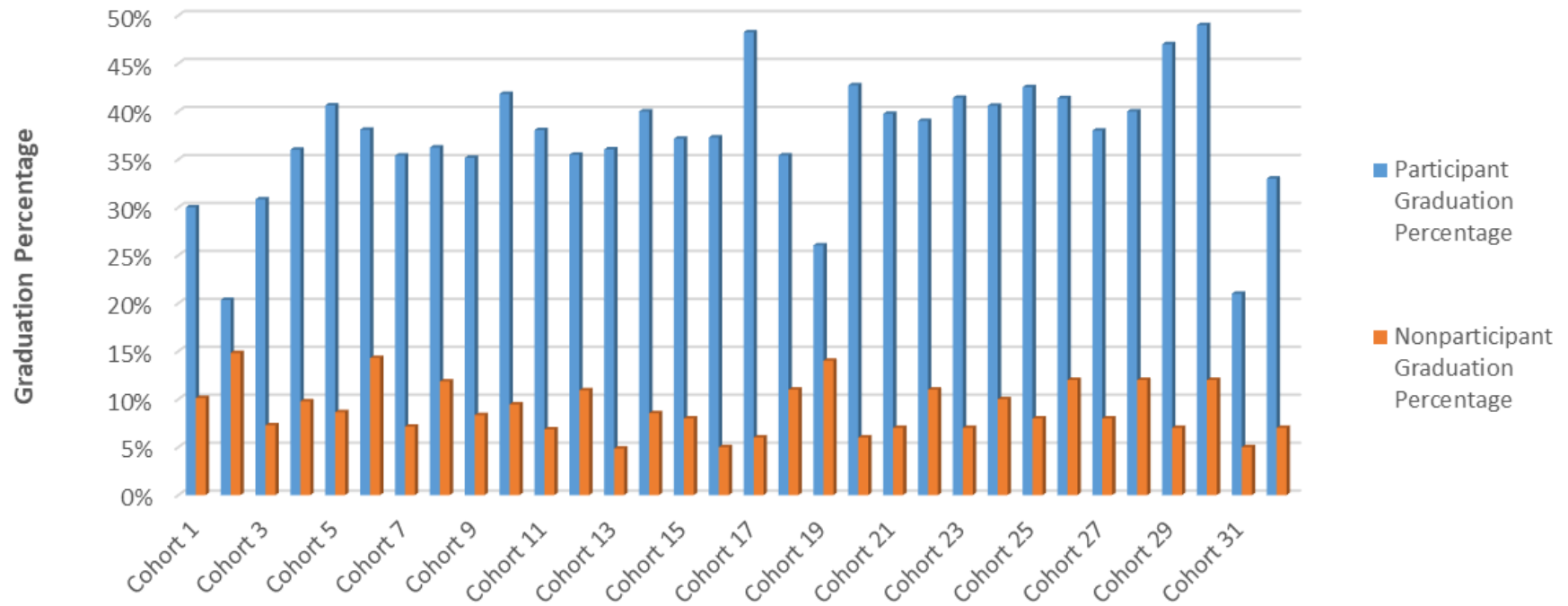
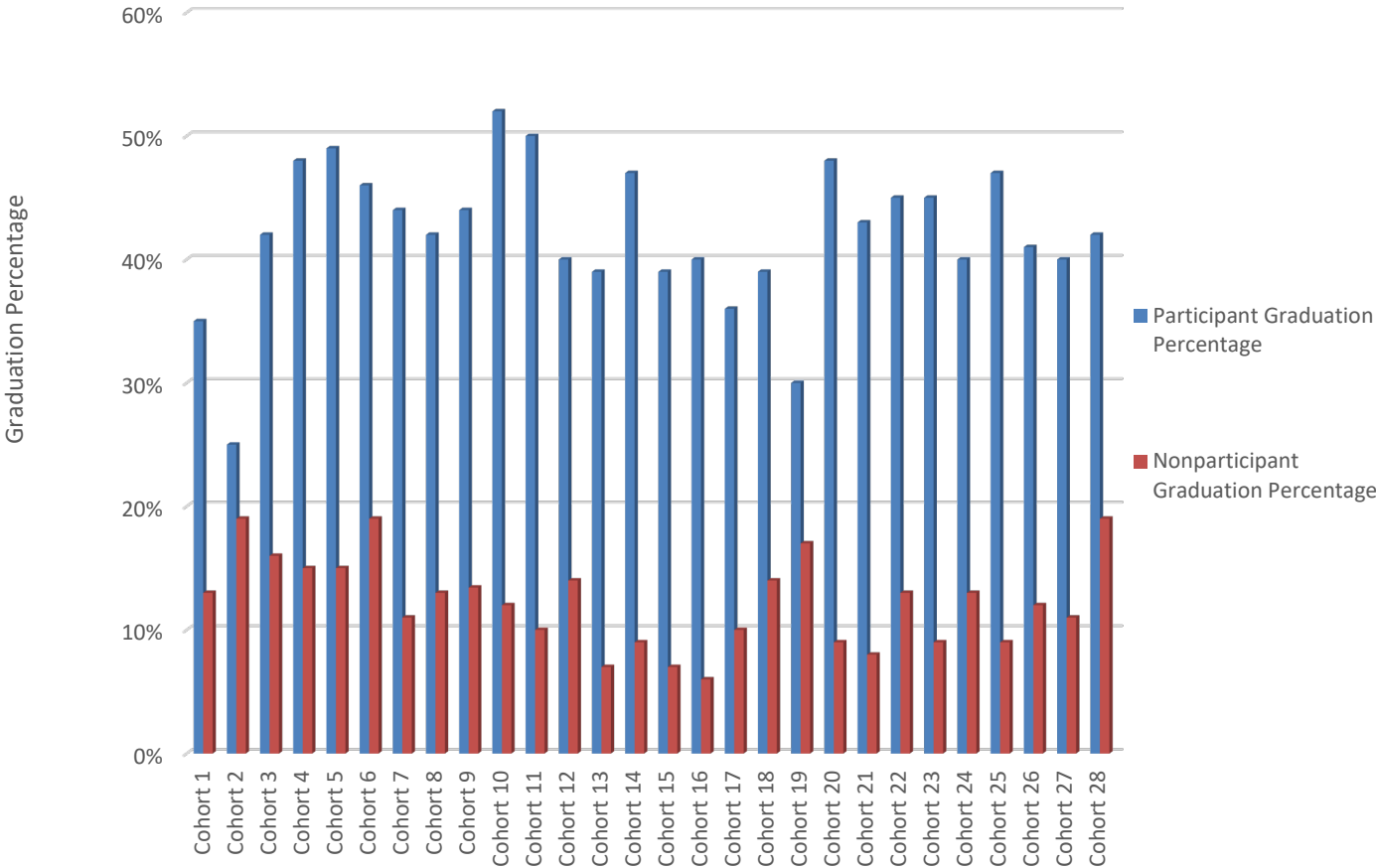


Table 4: Comparison of Student Six Year Graduation Rate*

Cohort—Participation Semester	No. of LSSP Participants	No. of LSSP Participants Graduated	Participant Graduation Percentage	No. of Nonparticipants	No. of Nonparticipants Graduated	Nonparticipant Graduation Percentage
Cohort 1—Fall 2005	60	21	35%	89	12	13%
Cohort 2—Spring 2006	59	15	25%	54	10	19%
Cohort 3—Fall 2006	120	50	42%	151	24	16%
Cohort 4—Spring 2007	100	48	48%	92	14	15%
Cohort 5—Fall 2007	160	78	49%	162	25	15%
Cohort 6—Spring 2008	84	39	46%	105	20	19%
Cohort 7—Fall 2008	195	86	44%	154	17	11%
Cohort 8—Spring 2009	149	62	42%	135	17	13%
Cohort 9—Fall 2009	219	96	44%	216	29	13%
Cohort 10--Spring 2010	153	80	52%	148	15	10%
Cohort 11--Fall 2010	205	102	50%	248	15	6%
Cohort 12--Spring 2011	155	62	40%	183	26	14%
Cohort 13--Fall 2011	222	87	39%	309	23	7%
Cohort 14--Spring 2012	175	82	47%	159	14	9%
Cohort 15--Fall 2012	218	84	39%	290	21	7%
Cohort 16--Spring 2013	110	44	40%	167	11	7%
Cohort 17--Fall 2013	143	52	36%	265	27	10%
Cohort 18--Spring 2014	96	37	39%	200	28	14%
Cohort 19--Fall 2014	169	51	30%	341	57	17%
Cohort 20--Spring 2015	103	49	48%	154	14	9%
Cohort 21--Fall 2015	151	65	43%	230	18	8%
Cohort 22--Spring 2016	100	45	45%	150	20	13%
Cohort 23--Fall 2016	169	76	45%	234	21	9%
Cohort 24--Spring 2017	101	40	40%	169	22	13%
Cohort 25--Fall 2017	171	81	47%	334	31	9%
Cohort 26--Spring 2018	87	36	41%	180	22	12%
Cohort 27--Fall 2018	124	49	40%	314	33	11%
Cohort 28--Spring 2018	88	37	42%	115	22	19%
Totals	3886	1654	43%	5348	608	11%

* Six Year Graduation Rate is determined after a 6 year period beginning with the Bulldog Rebound participation semester.

Six Year Graduation Rate



Summary of Bulldog Rebound Percentages

